

MODEL	SWITCH 1	SWITCH 2	SWITCH 3
GDC 302	SET AT 5.4±0.1 BAR REL. AT 20°C	SET AT 5.1±0.1 BAR REL. AT 20°C	SET AT 5.1±0.1 BAR REL. AT 20°C

Fig.	Material/Materiale	N° Series / Serie	Finishing / Finitura
Filing Room Archivio	Thread quality tolerance Tolleranza filetti qualità "6g-6S" UNI 5541-65	General tolerance for machining / Tolleranze generali per lavorazioni meccaniche: Coord.Punching N.C. mach. Coord. punzon. a C.N. JS11	Quality for linear dimension Qualità per quote lineari
Prep. Dis. M. BOSISIO	Resp. Dep. Uff. Resp.	Title Titolo GAS DENSITY CONTROLLER type GDC	
App. App. P. CIBOLDI	Emissione nuovo disegno		Apparatus Apparecchio Doc. No. N° Doc.
Rev./Mod.	04/11/2008	43907730	
ELECTRONSYSTEM MD S.r.l.			Scale Scala 1:1 Sh.No. N° Pag. 1

Piano di Campionamento (UNI ISO 2859)

LIVELLO	LQA
L2	1

We reserve all rights in this document and in the information contained therein. Reproduction, use or disclosure to third parties without express authority is strictly forbidden.

Ci riserviamo tutti i diritti connessi con il presente documento e con l'oggetto o la materia ivi rappresentati con divieto di riproduzione, utilizzarlo o renderlo accessibile a terzi in assenza di previa autorizzazione.

Rev./Mod. A Data 21.03.2012 Descrizione: Aggiornamento Technical features

Rev./Mod. Descrizione: Data

Rev./Mod. Descrizione: Data

Rev./Mod. Descrizione: Data

Rev./Mod. Descrizione: Data

Rev./Mod. Descrizione: Data

Rev./Mod. Descrizione: Data

Rev./Mod. Descrizione: Data

TECHNICAL FEATURES:

DESCRIPTION:

TEMPERATURE COMPENSATED GAS CONTROLLER

DESIGNATIONS:

Gas density controller type GDCxyy (x= n° of contacts ; yy= setting level)

1 Materials:

- 1.1 Housing material : EN AB-46100 powder coated RAL9006
- 1.2 Pressure connection material : AISI 303
- 1.3 Bellows material : AISI316L
- 1.4 Viewing glass material : polycarbonate glass, UV and ozone resistant
- 1.5 Cable connection material : brass nickel-plated
- 1.6 Inner o.rings material : EPDM70 peroxide cured until -40°C (on request version LT -60°C)
- 1.7 Pointer material : aluminium

2 Electrical data:

- 2.1 Contact execution : micro switch
- 2.2 Contact material : pure silver
- 2.3 Withstand voltage : 2kV, 50Hz for:
connections against each other
connection against earth
- over opened contact : 1kV, 50Hz
- 2.4 Minimum capacity of microswitch contacts :
see table A
- 2.5 Electrical connection with encoded plug-in terminal block with screw connection (marked with terminal numbers) up to 2.5 mmq finely stranded conductor with cable end sleeve.
- 2.6 Cable gland M25x1.5 (Ø8...Ø16mm) - EMC type (EMV type on request)
- 2.7 Electrical life time at maximum load : 50.000 switching operations
- 2.8 Electrical connection between cover and case in order to ensure the same potential

3 Protection degree (DIN EN 60529): IP67

4 Working conditions

- 4.1 Environmental conditions:
Operating temperature:
Standard : -40°C to +85°C
LT version : -60°C to +85°C
Transport and storage : -60°C to 85°C
Relative air humidity in yearly average <80%, occasionally 100%
- 4.2 Even in the original design assure insulation of the reference chamber, protections from rain and direct sun are available

5 Temperature compensation by filled reference bellow

- 5.1 Setting level for monitoring of reference chamber leakage in available.
- 5.2 Reference chamber volume protected by direct impact of sun.

6 Scaled indicator

- 6.1 Working range of the display : between the lowest switching level and the nominal pressure
- 6.2 Main scale (temperature compensated)
 - 6.2.1 Display tolerance : ±0.1 bar at 20°C
 - 6.2.2 Deviation by temperature influence : ±0.1 bar at limit temperature
 - 6.2.3 Instrument dial according to the version
 - 6.2.4 Instrument dial and indicator UV resistant
- 6.2.5 Working range of the display : between the lowest switching level and the nominal pressure
- 6.3 Zero indication not temperature compensated

7 Pressure range : from -1 to 10 bar relative

8 Switching level

- 8.1 Up to 4 setting levels
- 8.2 Switching tolerance (Hysteresis) <0.20 bar
- 8.3 Switching accuracy : ±0.08 bar
- 8.4 Tolerance of the isocore < ±0.08 bar
- 8.5 Switching compensated from -40°C to +85°C (on request LT version up to -60°C)
- 8.6 Switching point factory calibrated
- 8.7 Switching point for self autodiagnosis on request

9 Leakage rate

- 9.1 Leakage rate of the reference volume < 5x10⁻¹⁰ mbar x l/s.
- 9.2 Leakage rate of the bellows : < 1x10⁻⁹ mbar x l/s.
- 9.3 Leakage test with helium gas

10 Shockproof : 30G on 3 axys

11 Equipped with a GORE membrane vent to prevent the condensation

12 Weight : ≈ 800 gr.

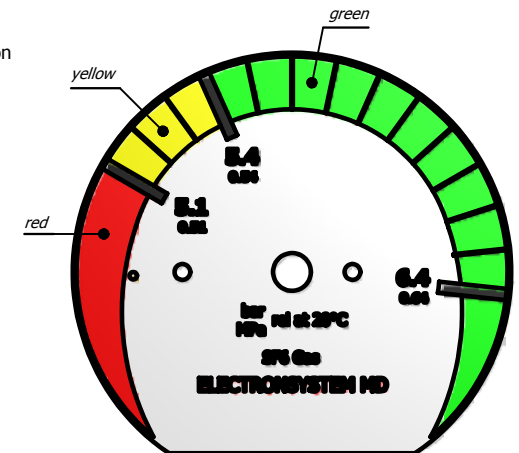
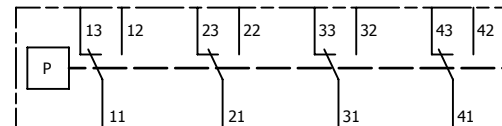
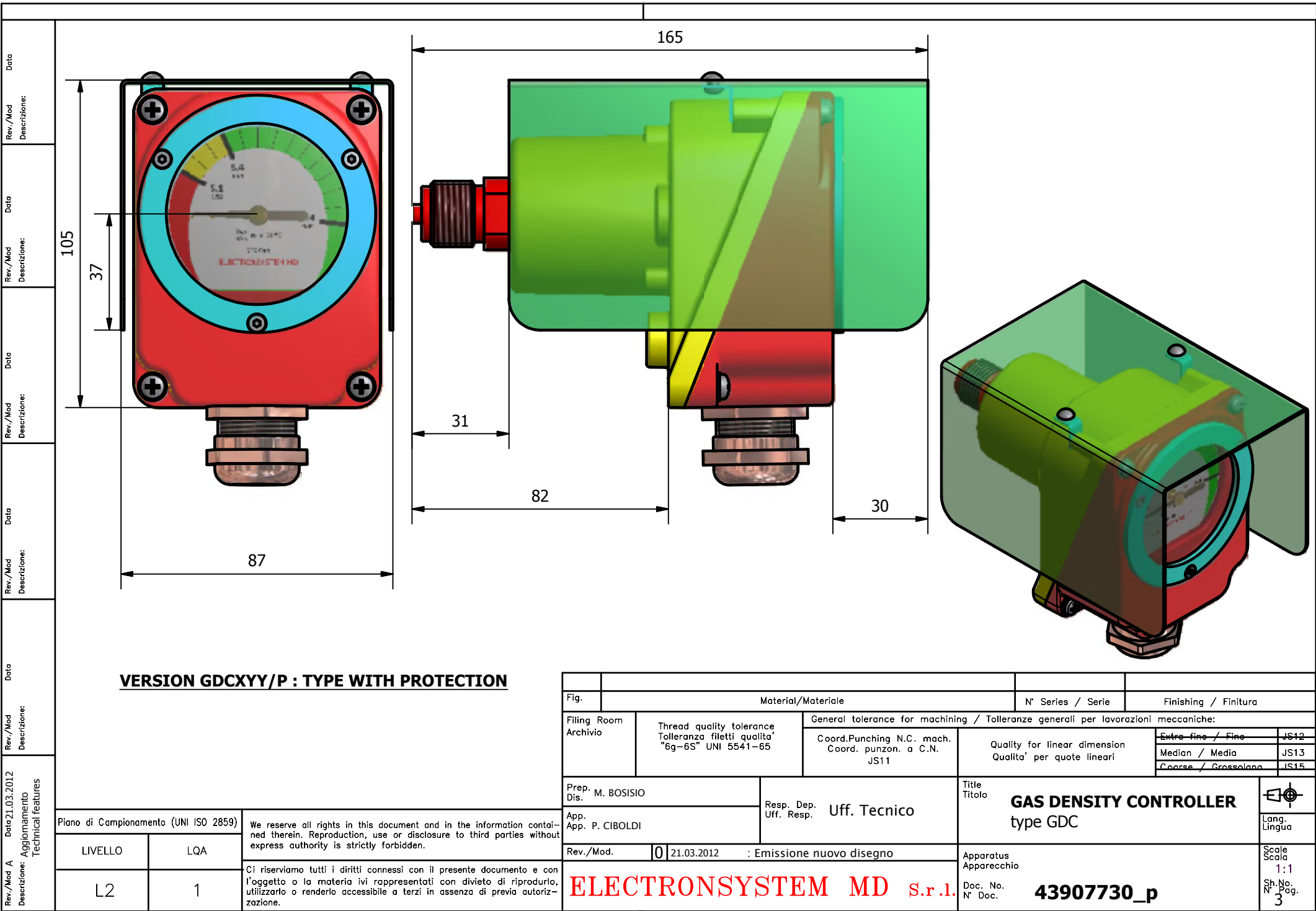


TABLE A

Rated voltage (V)	VDC	250	220	125	110	60	48	24
2.4.2 capacity (A)	1 (R)	0.2 A	0.25 A	0.4 A	0.5 A	1.5 A	1.9 A	3.0 A
2.4.2 capacity (A)	I (L/R=10 ms)	0.15 A	0.2 A	0.25 A	0.3 A	0.4 A	0.7 A	2.0 A

Fig.	Material/Materiale		N° Series / Serie	Finishing / Finitura	
Filing Room Archivio	Thread quality tolerance Tolleranza filetti qualita' "6g-6S" UNI 5541-65	General tolerance for machining / Tolleranze generali per lavorazioni meccaniche:			
Prep. Dis. M. BOSISIO	Coord. Punching N.C. mach. Coord. punzon. a C.N. JS11	Quality for linear dimension Qualita' per quote lineari		Extra fine / Fine JS12	
App. App. P. CIBOLDI	Resp. Dep. Uff. Resp. Uff. Tecnico	Title Titolo Technical Features GDC		Medion / Media JS13	
Rev./Mod.	0 05/11/2008	Emissione nuovo disegno		Coarse / Grossolano JS15	
Piano di Campionamento (UNI ISO 2859)			We reserve all rights in this document and in the information contained therein. Reproduction, use or disclosure to third parties without express authority is strictly forbidden.		Lang. Lingua
LIVELLO	LQA				
L2	1	Ci riserviamo tutti i diritti connessi con il presente documento e con l'oggetto o la materia ivi rappresentati con divieto di riprodurlo, utilizzarlo o renderlo accessibile a terzi in assenza di previa autorizzazione.		Scale Scala 1:1 Sh. No. N° 1 Pag.	
			ELECTRONSYSTEM MD S.r.l.		Apparatus Apparecchio 43907730_technical features GDC
			Doc. No. N° Doc.		



VERSION GDCXY/P : TYPE WITH PROTECTION

Fig.	Material/Materiale	N° Series / Serie	Finishing / Finitura
Filing Room Archivio	Thread quality tolerance Tolleranza filetti qualita' "6g-6S" UNI 5541-65	General tolerance for machining / Tolleranze generali per lavorazioni meccaniche: Coord.Punching N.C. mach. Coord. punzon. a C.N. JS11	Quality for linear dimension Qualita' per quote lineari
			Extra fine / Fine JS12
			Median / Media JS13
			Coarse / Grossolana JS15
Prep. Dis. M. BOSISIO	Resp. Dep. Uff. Resp. Uff. Tecnico	Title Titolo GAS DENSITY CONTROLLER type GDC	
App. App. P. CIBOLDI		Apparatus Apparecchio	Lang. Lingua
Rev./Mod.	0 21.03.2012 : Emissione nuovo disegno	Doc. No. N° Doc. 43907730_p	Scale Scala 1:1 Sh.No. N° Pag. 3

Piano di Campionamento (UNI ISO 2859)		We reserve all rights in this document and in the information contained therein. Reproduction, use or disclosure to third parties without express authority is strictly forbidden. Ci riserviamo tutti i diritti connessi con il presente documento e con l'oggetto o la materia ivi rappresentati con divieto di riprodurlo, utilizzarlo o renderlo accessibile a terzi in assenza di previa autorizzazione.
LIVELLO	LQA	
L2	1	

Rev./Mod. Descrizione:	Date
Rev./Mod. Descrizione:	Date
Rev./Mod. Descrizione:	Date
Rev./Mod. Descrizione:	Date
Rev./Mod. Descrizione:	Date
Rev./Mod. Descrizione:	Date
Rev./Mod. Descrizione:	Date
Rev./Mod. Descrizione:	Date
Rev./Mod. Descrizione:	Date