

Fig.	Material/Materiale	N° Series / Serie	Finishing / Finitura
Filing Room Archivio	Thread quality tolerance Tolleranza filetti qualita' "6g-6S" UNI 5541-65	General tolerance for machining / Tolleranze generali per lavorazioni meccaniche: Coord.Punching N.C. mach. Coord. punzon. a C.N. JS11	Quality for linear dimension Qualita' per quote lineari Extra fine / Fine JS12 Medion / Media JS13 Coarse / Grossolana JS15
Prep. Dis. M. BOSISIO	Resp. Dep. Uff. Tecnico	Title Titolo GAS DENSITY CONTROLLER type GDC	
App. App. P. CIBOLDI	Rev./Mod. 0 04/11/2008 : Emissione nuovo disegno	Apparatus Apparecchio	Lang. Lingua Scale Scala 1:1 Sh.No. N° Pag. 1
ELECTRONSYSTEM MD S.r.l.		Doc. No. N° Doc.	43907750

Piano di Campionamento (UNI ISO 2859)

LIVELLO	LQA
L2	1

We reserve all rights in this document and in the information contained therein. Reproduction, use or disclosure to third parties without express authority is strictly forbidden.
 Ci riserviamo tutti i diritti connessi con il presente documento e con l'oggetto o la materia ivi rappresentati con divieto di riproduzione, utilizzarlo o renderlo accessibile a terzi in assenza di previa autorizzazione.

TECHNICAL FEATURES:

DESCRIPTION:

TEMPERATURE COMPENSATED GAS CONTROLLER

DESIGNATIONS:

Gas density controller type GDCxyy (x= n° of contacts ; yy= setting level)

1 Materials:

- 1.1 Housing material : EN AB-46100 powder coated RAL9006
- 1.2 Pressure connection material : AISI 303
- 1.3 Bellows material : AISI316L
- 1.4 Viewing glass material : polycarbonate glass, UV and ozone resistant
- 1.5 Cable connection material : brass nickel-plated
- 1.6 Inner o.rings material : EPDM70 peroxide cured until -40°C
- 1.7 Pointer material : aluminium

2 Electrical data:

- 2.1 Contact execution : micro switch
- 2.2 Contact material : pure silver
- 2.3 Withstand voltage : 2kV, 50Hz for:
 - connections against each other
 - connection against earth
- over opened contact : 1kV, 50Hz
- 2.4 Minimum capacity of microswitch contacts : see table A
- 2.5 Electrical connection with encoded plug-in terminal block with screw connection (marked with terminal numbers) up to 2.5 mmq finely stranded conductor with cable end sleeve.
- 2.6 Cable gland M25x1.5 (Ø8...Ø16mm) - EMC type (EMV type on request)
- 2.7 Electrical life time at maximum load : 50.000 switching operations
- 2.8 Electrical connection between cover and case in order to ensure the same potential

3 Protection degree (DIN EN 60529): IP67

4 Working conditions

4.1 Environmental conditions:

- Operating temperature: Standard : -40°C to +85°C
- Transport and storage : -60°C to 85°C
- Relative air humidity in yearly average <80%, occasionally 100%

5 Temperature compensation by filled reference bellow

6 Scaled indicator

- 6.1 Working range of the display : betwee the lowest switching level and the nominal pressure
- 6.2 Main scale (temperature compensated)
 - 6.2.1 Display tolerance : ±0.1 bar at 20°C
 - 6.2.2 Deviation by temperature influence : ±0.1 bar at limit temperature
 - 6.2.3 Instrument dial according to the version
 - 6.2.4 Instrument dial and indicator UV resistant
 - 6.2.5 Working range of the display : betwee the lowest switching level and the nominal pressure
- 6.3 Zero indication not temperature compensated

7 Pressure range : from -1 to 10 bar relative

8 Switching level

- 8.1 Up to 4 setting levels
- 8.2 Switching tolerance (Hysteresis) <0.20 bar
- 8.3 Switching accuracy : ±0.08 bar
- 8.4 Tolerance of the isocore < ±0.08 bar
- 8.5 Switching compensated from -40°C to +85°C (on request LT version up to -60°C)
- 8.6 Switching point factory calibrated

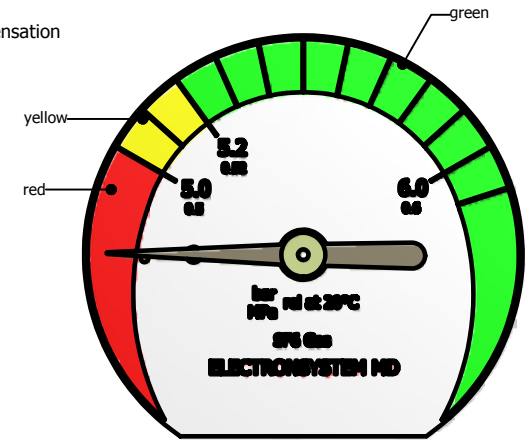
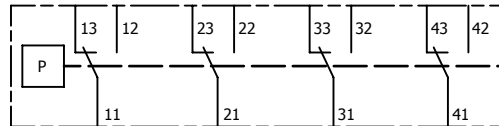
9 Leakage rate

- 9.1 Leakage rate of the reference volume < 5x10⁻¹⁰ mbar x l/s.
- 9.2 Leakage rate of the bellows : < 1x10⁻⁹ mbar x l/s.
- 9.3 Leakage test with helium gas

10 Shockproof : 30G on 3 axys

11 Equipped with a GORE membrane vent to prevent the condensation

12 Weight : ≈ 800 gr.



Example dial - Indication without pressure

TABLE A

Rated voltage (V)	VDC	250	220	125	110	60	48	24
2.4.2 capacity (A)	I (R)	0.2 A	0.25 A	0.4 A	0.5 A	1.5 A	1.9 A	3.0 A
2.4.2 capacity (A)	I (L/R=10 ms)	0.15 A	0.2 A	0.25 A	0.3 A	0.4 A	0.7 A	2.0 A

Fig.	Material/Materiale		N° Series / Serie	Finishing / Finitura	
Filing Room Archivio	Thread quality tolerance Tolleranza filetti qualita' "6g-6S" UNI 5541-65	General tolerance for machining / Tolleranze generali per lavorazioni meccaniche:			
		Coord.Punching N.C. mach. Coord. punzon. a C.N. JS11	Quality for linear dimension Qualita' per quote lineari	Extra fine / Fine JS12	
				Medion / Media JS13	
				Coarse / Grossolana JS15	
Prep. Dis. M. BOSISIO	Resp. Dep. Off. Tecnico		Title Titolo Technical Features GDC		
App. P. CIBOLDI					Lang. Lingua
Rev./Mod. 0	04/11/2008 : Emissione nuovo disegno		Apparatus Apparecchio 43907750_technical features GDC		Scale Scala 1:1
ELECTRONSYSTEM MD S.r.l.			Doc. No. N° Doc.		Sh. No. N° Pag. 1