

TECHNICAL FEATURES:

- BODY MATERIAL : Aluminium 6082 (Al Mg Si1) anodized
- O.RING MATERIAL : EPDM70 (included)
- TEMPERATURE RANGE : from -40°C to 100°C
- PASSAGE SECTION : 30 mmq
- LEAKAGE RATE : <math>< 1 \times 10^{-7}</math> mbar x l/s.
- BATCH NUMBER AND EMD (Electronsystem MD identification) ARE PRINTED ON VALVE.
- EACH VALVES ARE PACKED WITH O.RING

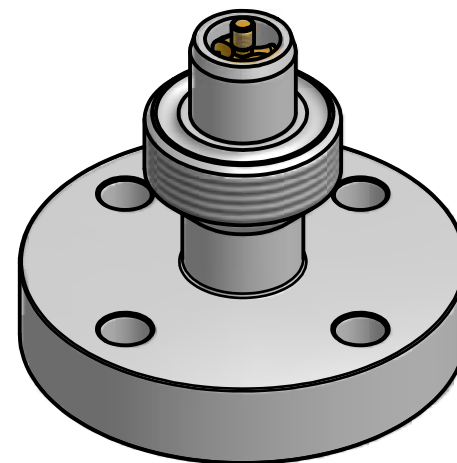


Fig.	Material/Materiale	N° Series / Serie	Finishing / Finitura								
Filing Room Archivio	Thread quality tolerance Tolleranza filetti qualità "6g-6S" UNI 5541-65	General tolerance for machining / Tolleranze generali per lavorazioni meccaniche: Coord.Punching N.C. mach. Coord. punzon. a C.N. JS11	Quality for linear dimension Qualità per quote lineari								
Prep. Dis. M. BOSISIO	Resp. Dep. Uff. Tecnico	Title Titolo titolo	<table border="1"> <tr> <td>Extra fine / Fine</td> <td>JS12</td> </tr> <tr> <td>Medion / Media</td> <td>JS13</td> </tr> <tr> <td>Coarse / Grossolana</td> <td>JS15</td> </tr> </table>	Extra fine / Fine	JS12	Medion / Media	JS13	Coarse / Grossolana	JS15		
Extra fine / Fine	JS12										
Medion / Media	JS13										
Coarse / Grossolana	JS15										
App. App. P. CIBOLDI	Rev./Mod. 0 02/05/07 : Emissione nuovo disegno	Apparatus Apparecchio	<table border="1"> <tr> <td>Lang. Lingua</td> <td>Scale Scala</td> </tr> <tr> <td></td> <td>1:1</td> </tr> <tr> <td></td> <td>Sh.No. N°</td> </tr> <tr> <td></td> <td>1</td> </tr> </table>	Lang. Lingua	Scale Scala		1:1		Sh.No. N°		1
Lang. Lingua	Scale Scala										
	1:1										
	Sh.No. N°										
	1										
Piano di Campionamento (UNI ISO 2859) LIVELLO LQA L2 1		We reserve all rights in this document and in the information contained therein. Reproduction, use or disclosure to third parties without express authority is strictly forbidden. Ci riserviamo tutti i diritti connessi con il presente documento e con l'oggetto o la materia ivi rappresentati con divieto di riprodurlo, utilizzarlo o renderlo accessibile a terzi in assenza di previa autorizzazione.									
ELECTRONSYSTEM MD S.r.l.		Doc. No. 43906060									