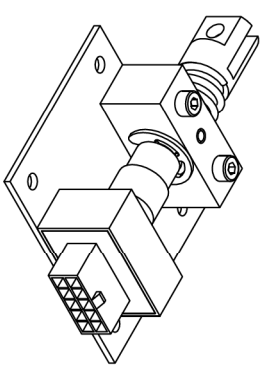
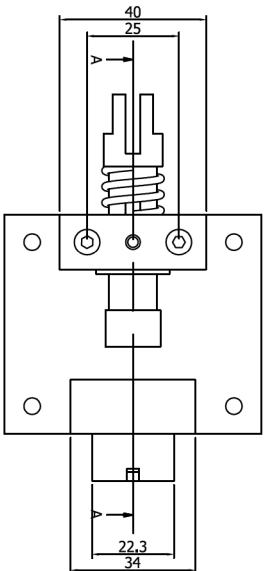


1-6 NO/NC switch
7-9 NO/NC switch
4-9 NO/NC switch
5-10 NO/NC switch

LS / 1÷5



TECHNICAL DATA	
CONDITIONS	MAX UNIT
Switching voltage	1000 V
DC or AC peak	V
Switching current	1 A
Carry current	V
DC or AC	A
Pulsed carry current	3 A
DC or AC 50ms	A
Stock	50
1/2 sine wave 11ms	9
Vibration	20 g
Operating temperature	-40°÷+130° C

PURCHASE CODE:
Description : Linear switch
Code : LS / /

1= Normally Open
2= Normally Closed
1÷5= number of switch

Rev./Mod. Descrizione: Data
L2 1

Rev./Mod. Descrizione: Data
L2 1

Fig. Metodo/Methoda

Filling Room Active
Tread quality tolerance
Tolleranza filett qualità
Eq-05 UNI 5541-05

Coord./Punching N.C. mech.
Coord. punzon. a C.N.
5511

App. P. GUIZZETTI

Rep. Dep. Uff. Tecnico

Titolo
LINEAR SWITCH
LS / _ / _

Apparato
Doc. No.
N° 06...

43911051

Scale
1:1
1/2

Fig. Metodo/Methoda

Filling Room Active
Tread quality tolerance
Tolleranza filett qualità
Eq-05 UNI 5541-05

Coord./Punching N.C. mech.
Coord. punzon. a C.N.
5511

App. P. GUIZZETTI

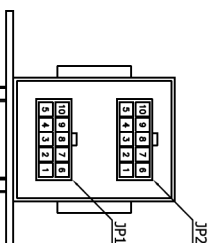
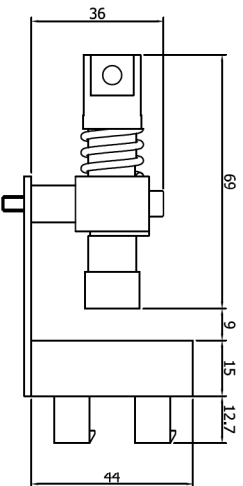
Rep. Dep. Uff. Tecnico

Titolo
LINEAR SWITCH
LS / _ / _

Apparato
Doc. No.
N° 06...

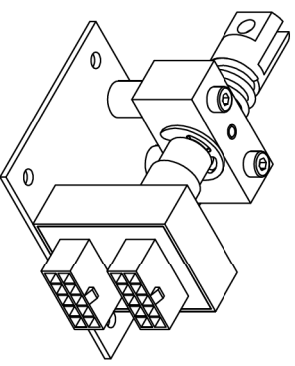
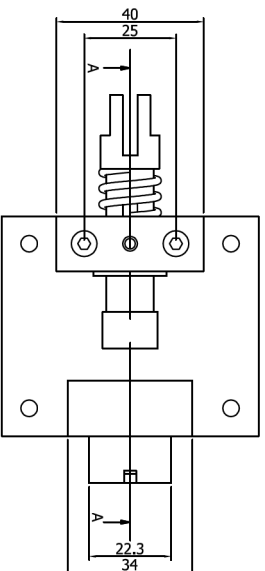
43911051

Scale
1:1
1/2



1-6 NO/NC switch
2-7 NO/NC switch
3-8 NO/NC switch
4-9 NO/NC switch
5-10 NO/NC switch

LS / 6÷10



TECHNICAL DATA	
CONDITIONS	MAX UNIT
Switching voltage	1000 V
DC or AC peak	V
Switching current	1 A
Carry current	2.5 A
DC or AC	A
Pulsed carry current	3 A
DC or AC 50ms	A
Stock	50
1/2 sine wave 11ms	9
Vibration	20 g
Operating temperature	-40°÷+130° C

PURCHASE CODE:
Description : Linear switch
Code : LS / /

1= Normally Open
2= Normally Closed
6÷10= number of switch

Rev./Mod. Descrizione: Data
L2 1

Rev./Mod. Descrizione: Data
L2 1

Fig. Metodo/Methoda

Filling Room Active
Tread quality tolerance
Tolleranza filett qualità
Eq-05 UNI 5541-05

Coord./Punching N.C. mech.
Coord. punzon. a C.N.
5511

App. P. GUIZZETTI

Rep. Dep. Uff. Tecnico

Titolo
LINEAR SWITCH
LS / _ / _

Apparato
Doc. No.
N° 06...

43911051

Scale
1:1
1/2

Fig. Metodo/Methoda

Filling Room Active
Tread quality tolerance
Tolleranza filett qualità
Eq-05 UNI 5541-05

Coord./Punching N.C. mech.
Coord. punzon. a C.N.
5511

App. P. GUIZZETTI

Rep. Dep. Uff. Tecnico

Titolo
LINEAR SWITCH
LS / _ / _

Apparato
Doc. No.
N° 06...

43911051

Scale
1:1
1/2