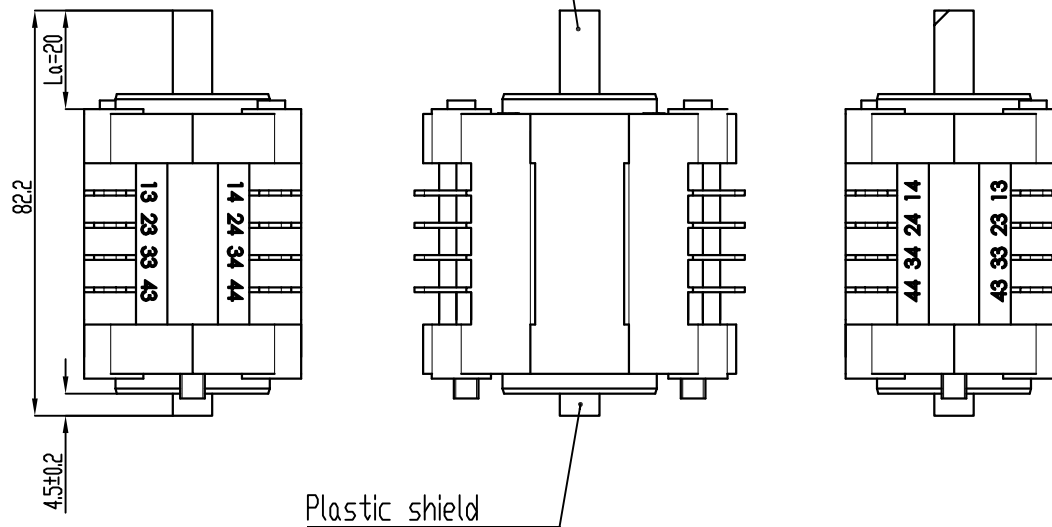


Operating mechanism side



Plastic shield

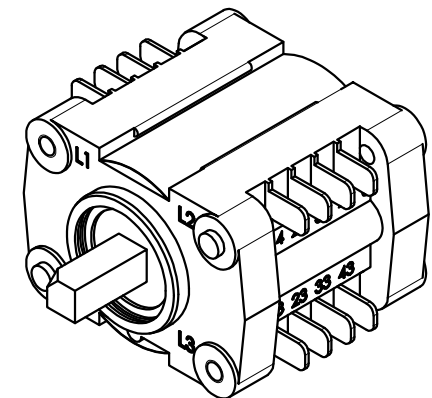
Terminal designation:

Type of connection: AMP push on contact: 1x A6.3x0.8 DIN 46244

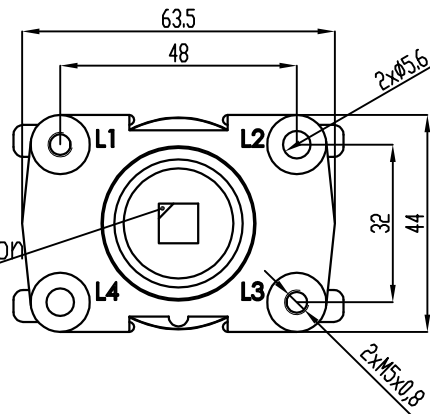
Max. permissible transfer resistance: 3mΩ

Max. permissible actuation torque: 15Ncm

All used parts needed to be UL-listed according to IEC 60695-11-10 V2 or better.



Operating mechanism side: Position, contacting L1 to L3



Chamfer for position indication

Piano di Campionamento (UNI 4842-75)

LIVELLO	LQA
L2	1

We reserve all rights in this document and in the information contained therein. Reproduction, use or disclosure to third parties without express authority is strictly forbidden.

Ci riserviamo tutti i diritti connessi con il presente documento e con l'oggetto o la materia ivi rappresentati con divieto di riprodurlo, utilizzarlo o renderlo accessibile a terzi in assenza di previa autorizzazione.

Fig.	Material/Materiale	N° Series / Serie	Finishing / Finitura						
Filing Room Archivio	Thread quality tolerance Tolleranza filetti qualità "6g-6S" UNI 5541-65	General tolerance for machining / Tolleranze generali per lavorazioni meccaniche: Coord. Punching N.C. mach. Coord. punzon. a C.N. JS11	Quality for linear dimension Qualità per quote lineari						
Prep. G. FORLANI Dis.	Resp. Dep. Uff. Tecnico Uff. Resp.	Title Titolo	<table border="1"> <tr> <td>Extra fine / Fine</td> <td>JS12</td> </tr> <tr> <td>Median / Media</td> <td>JS13</td> </tr> <tr> <td>Coarse / Grossolana</td> <td>JS15</td> </tr> </table>	Extra fine / Fine	JS12	Median / Media	JS13	Coarse / Grossolana	JS15
Extra fine / Fine	JS12								
Median / Media	JS13								
Coarse / Grossolana	JS15								
App. P. GUIZZETTI		<p>ROTARY AUXILIARY SWITCH 8 POLES</p>	Lang. Lingua						
Rev./Mod.	0   24.11.2011 : Emissione nuovo disegno	Apparatus Apparecchio	Scale Scala						
ELECTRONSYSTEM MD S.r.l.		Doc. No. N° Doc.	<p>43911089</p> <p>1:1 Sh. No. N° Pag. 1/2</p>						

