

# **CONTROLLING DEVICE FOR MOTORISED DISCONNECTORS**

## ***CUSTOMER SATISFACTION:***

- Devices engineered according to utility or customer specification but developed in partnership with manufacturer to obtain a tailor made product;
- Since 2001 we have produced more than 60.000 pcs for the most important motorised disconnector manufacturers in Italy and Germany;
- Growing up forecast because of high quality and competitive prices;
- One by one testing.

## ***TYPE TEST***

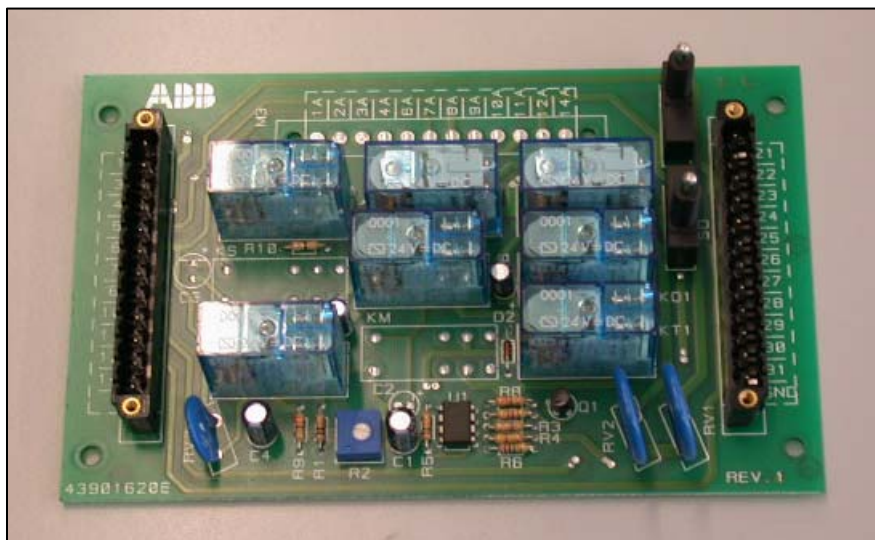
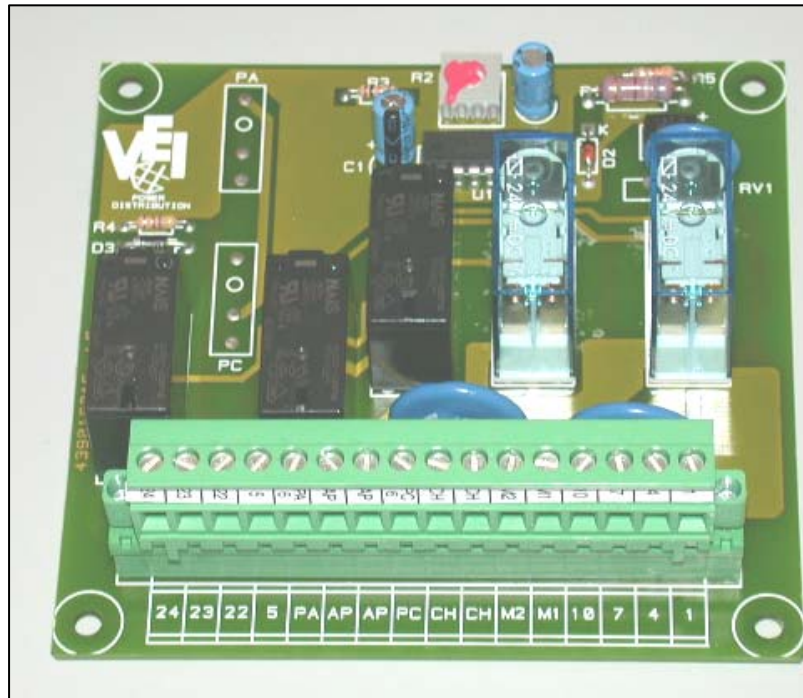
- Conform to IEC947 , CEI EN60947 and VDE 0660
- Mechanical and electric stress with n° 1000 cycles C-O
- Climatic test from -15°C to 50°C
- Supply auxiliary voltage Vn +/- 20%

# CONTROLLING DEVICE FOR MOTORISED DISCONNECTORS

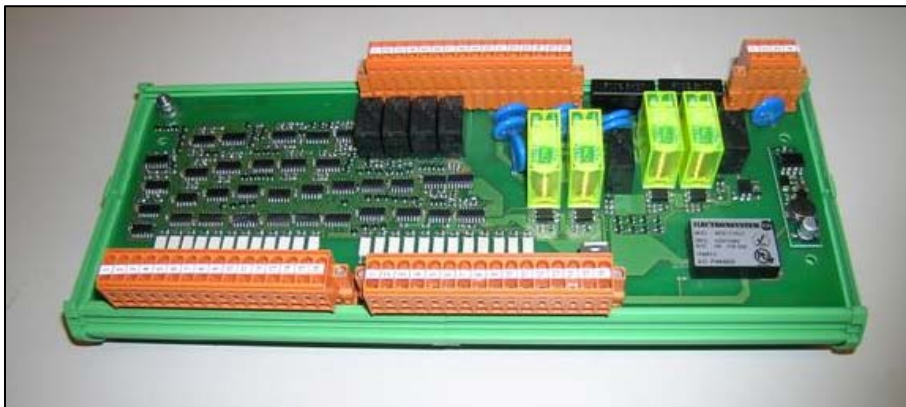
## ***LEADING FEATURES:***

- Drives the motor for many thousands cycles and save in case of overload;
- Elaborates information from external peripherals and reacts according to real time net situation;
- Allows remote or local control;
- The breaking capacity of power relays is 10A 24Vcc operating with the motor;
- Fully agreed and approved by italian utility ENEL DY1050 specifications
- Customised boards for different motors
- Digital micro-controller supervision: continuous net test for real time failure identification
- Alarm indication for bad external switch position or opening-closing time delayed
- Local and remote indication of switch-gear position
- Breaking capacity of power relays up to 20A 250Vca or 5A 230 Vcc operating with the motor;
- Special application with wide gap relay for DC current up to 1,5A 220 Vdc
- Fully protected by input filters against overvoltage and electrical noise

# CONTROLLING DEVICE FOR MOTORISED SWITCHGEAR



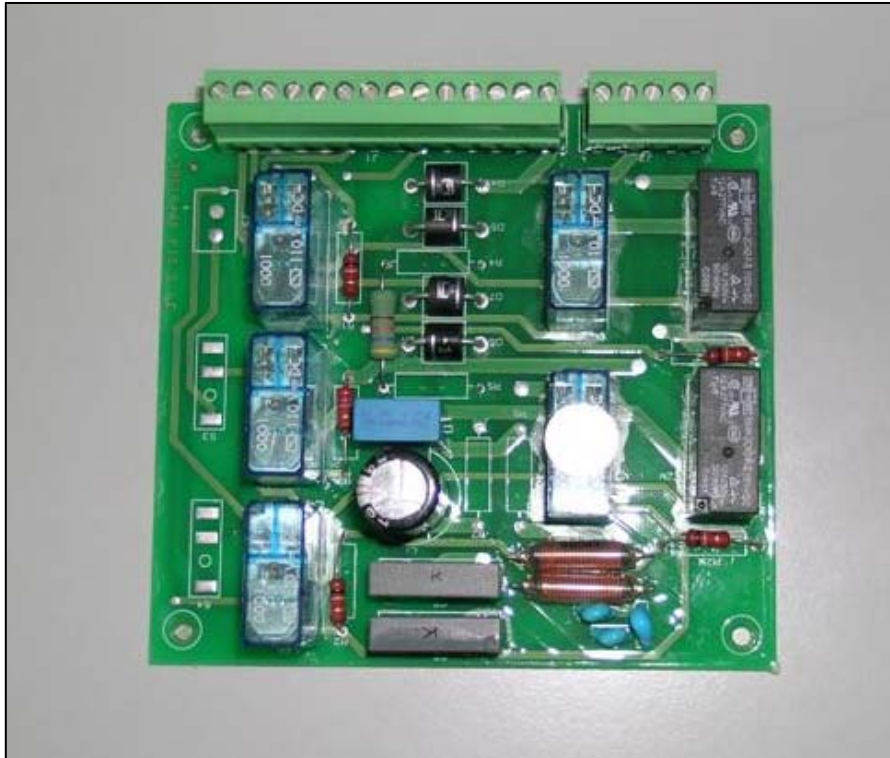
# CONTROLLING DEVICE FOR MOTORISED SWITCHGEAR



# CONTROLLING DEVICE FOR MOTORISED SWITCHGEAR



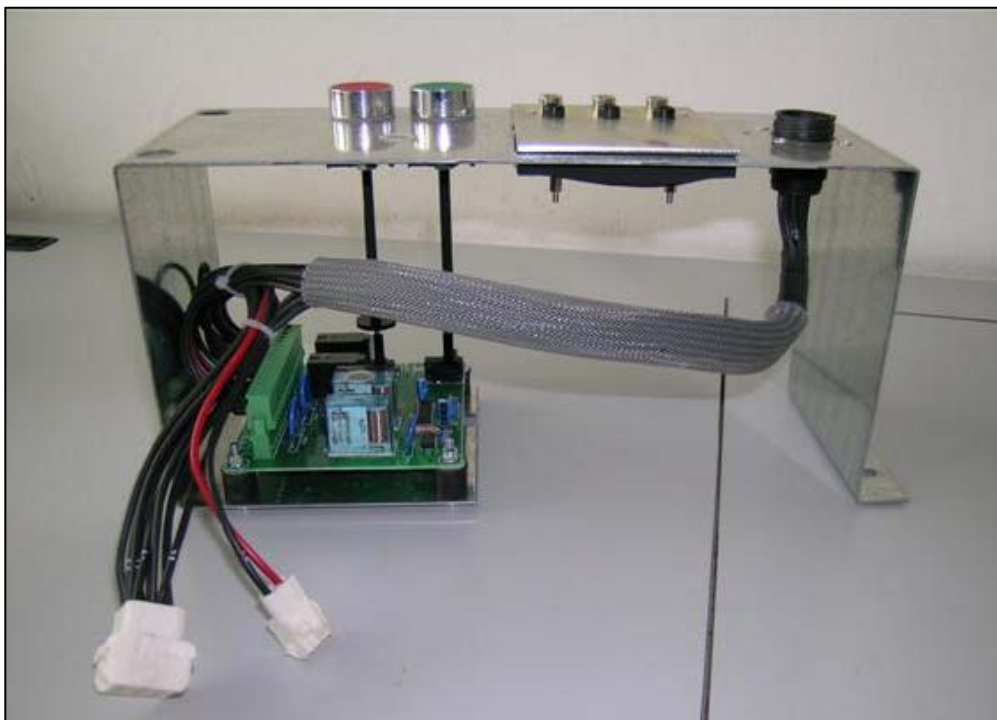
# CONTROLLING DEVICE FOR MOTORISED SWITCHGEAR



# **CONTROLLING DEVICE FOR MOTORISED DISCONNECTORS**

## ***COMPLETE PANEL BOARD:***

- The circuit board is mounted directly on panel
- On panel push buttons activate on board micro switches
- The control board is wired and tested directly through external cable



## **CONTROLLING DEVICE FOR MOTORISED DISCONNECTORS**

### ***COMPLETE PANEL BOARD:***

- Metallic frame and supporting plate production with certified materials and surface treatments
- Special cable for any kind of electrical application or electronic link
- Micro-switches of aux contacts positioning and regulation

