

VALVES & COUPLINGS DIVISION

ELECTRONSYSTEM 
WWW.ELECMD.IT - SINCE 1992

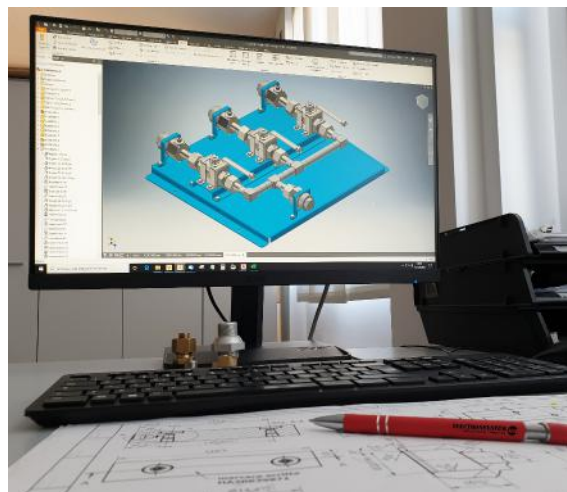
ELECTRONSYSTEM MD, excelling in the marketplace since 1992.

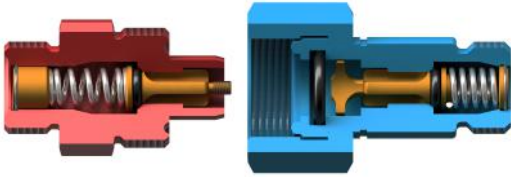
Our design focus has always been to **connect sensors to switchgears**. After decades of experience and hundreds of thousands of valves sold, we continue to offer couplings & valves according to customer requests, couplings with integrated sensors, as well as complete manifold assemblies which can include plumbing.



We pride ourselves on our commitment to:

- Staffing highly qualified engineers with over 30 years combined experience in both field and factory environments.
- Providing innovative, safe and reliable solutions to problems.
- Fluidly adapting to meet technical and financial needs.
- Maintaining a strong collaborative relationship during all phases of projects (design, assembly, testing, and marketing).





OPEN COUPLING

FEATURES:

Type:

- DN6
- DN8
- DN12
- DN20
- DN40

Body material:

- Stainless Steel AISI 303 or 316
- Aluminium AL6082 with anodization on request
- Brass CW 614N

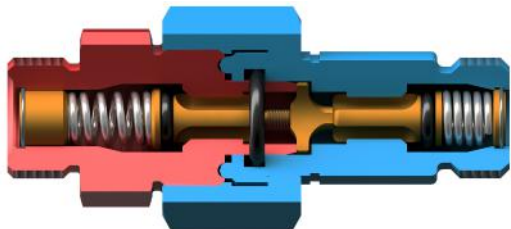
* Other alloy on request

Temperature range:

- Standard -40° to +85 °C
- Low Temperature Version /LT up to -60°C

Type of tightness:

- Metal to Metal Technology
- O-ring Technology

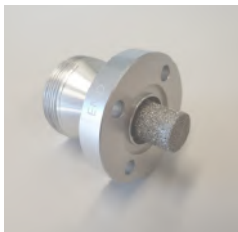


CLOSED COUPLING

Electronsystem MD offers a wide **valves and couplings** range.

Each of our valves can be **customized** and supplied with **accessories** on request.

Our products are compatible with all kind of gases.



MANIFOLDS AND ADAPTERS

Electronsystem can provide a large variety of **adapters** and **pipings** to guarantee connections between components with different nominal lengths and different type of DN connection.



HOSES

We offer a wide range of hose options in rubber SAE 100 /R6 or stainless steel to suit a variety of applications, in particular **SF6 gas supply**. Our hoses can be used up to 64 bar, they are pressure and vacuum tight and are available with different DN8/DN20 coupling connections.



BALL VALVES

A ball valve is a quarter-turn rotational motion valve that uses a ball-shaped disk to stop or start flow. If the valve is opened, the ball rotates to a point where the hole through the ball is in line with the valve body inlet and outlet. If the valve is closed, the ball is rotated so that the hole is perpendicular to the flow openings of the valve body and the flow stops.



CUSTOMIZED CASES

Waterproof case in copolymer polypropylene with shockproof and hermetic structure, resistant to water and dust, IP67 certified.

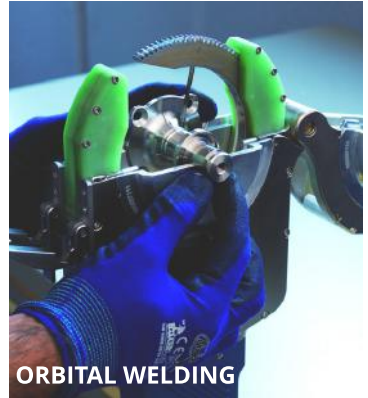
It's equipped with an automatic pressurization valve and a handle made of soft material for a comfortable grip; the closure lock tie comes with the possibility of applying two safety padlocks; it is supplied with various internal fittings and customized instrumentation kits.



WELDING AND LEAKAGE TEST

Our company has been able to develop a flexible and technological production system in the field of welding through the following techniques:

- TIG welding
- Orbital welding
- Braze welding (induction technology)



OUR VALVES ARE MAINTENANCE-FREE AND
100% HELIUM TESTED.



CERTIFICATIONS



Quality Management System standard:
UNI EN ISO 9001:2015 (ISO 9001:2015)

Environmental Management System standard:
UNI EN ISO 14001:2015 (ISO 14001:2015)

Occupational Health and Safety Management System standard:
OHSAS 18001:2007



OUR CUSTOMERS



SIEMENS

ABB

Schneider Electric

HITACHI

GE General Electric

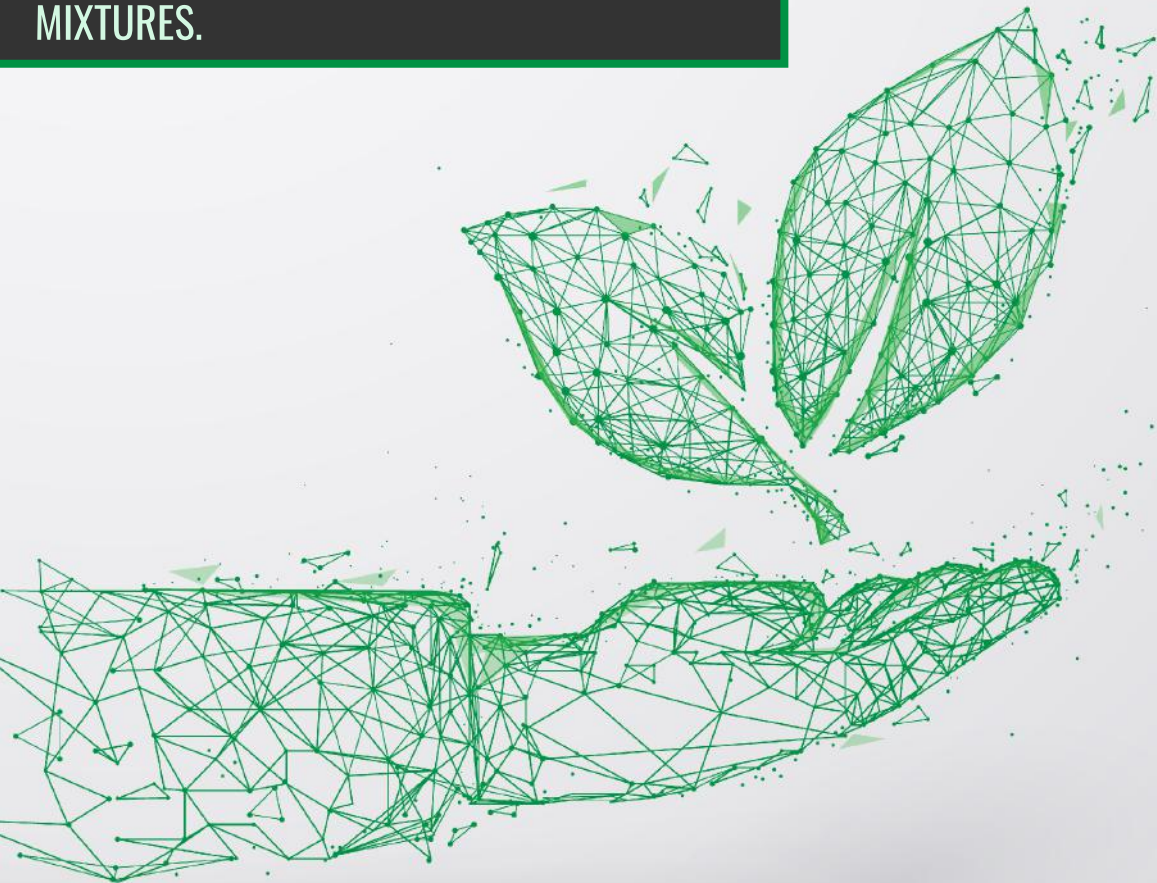
MITSUBISHI ELECTRIC

ORMAZABAL

AREVA

Our products comply with the latest guidelines
on SF6 usage.

WE ARE READY FOR ANY KIND OF GASES:
TRADITIONAL, GREEN AND ALTERNATIVE
MIXTURES.



ELECTRONSYSTEM
WWW.ELECMD.IT - SINCE 1992



Via Madonna delle Rose 72,
24061 Albano Sant'Alessandro (BG) ITALY
Phone: +39 035 584000
Email: info@elecmd.it